

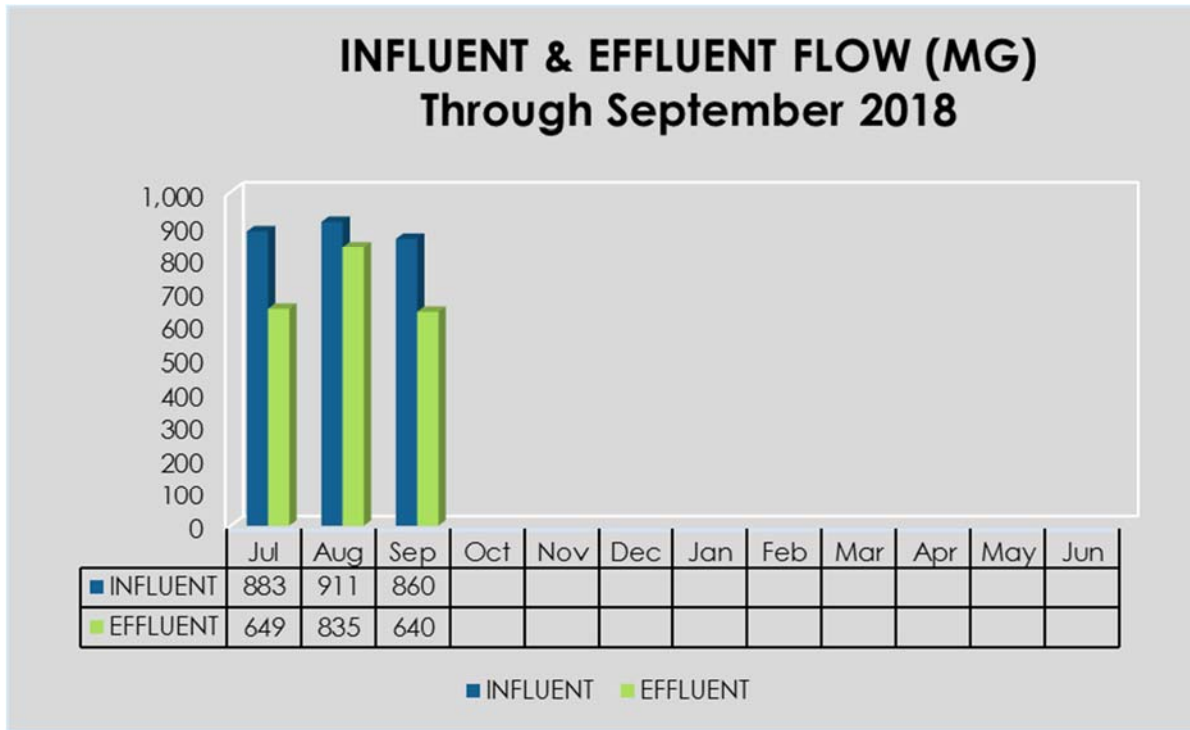


QUARTERLY OPERATIONS REPORT

1st Quarter, July – September 2018

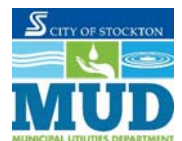
WASTEWATER

PERMIT COMPLIANCE



INFLUENT MONTHLY AVERAGE				EFFLUENT MONTHLY AVERAGE									
Month	Flow MGD	CBOD mg/L	TSS mg/L	Month	Flow MGD	cBOD mg/l	cBOD Removal %	TSS mg/l	TSS Removal %	Ammonia* mg/l	Turbidity NTU	pH	Dissolved Oxygen mg/l
				Permit Limit	≤55	<10	>85	<10	>85	≤1.2	<2	6.5-8.5	>6
July	28.5	360	330	July	20.9	<2.0	>99.6	<2.6	>99.4	<0.7	1.6	6.8-7.7	8.3
August	29.4	350	320	August	26.9	<2.0	>99.5	<2.6	>99.2	<0.6	1.5	6.8-7.5	9.3
September	28.7	380	310	September	21.3	<2.0	>99.6	<2.6	>99.4	0.9	1.6	6.7-7.5	9.1
October				October									
November				November									
December				December									
January				January									
February				February									
March				March									
April				April									
May				May									
June				June									

*Seasonal limits exist for Ammonia. Permit limit shown is specific for this reporting period.





WASTEWATER ENERGY CONSUMPTION/PRODUCTION

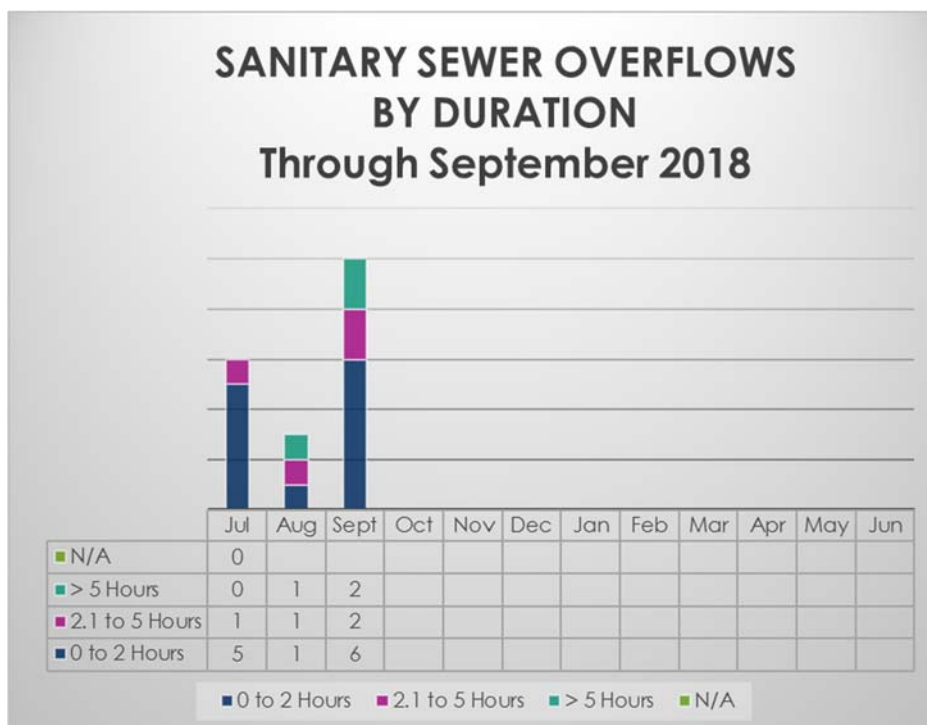
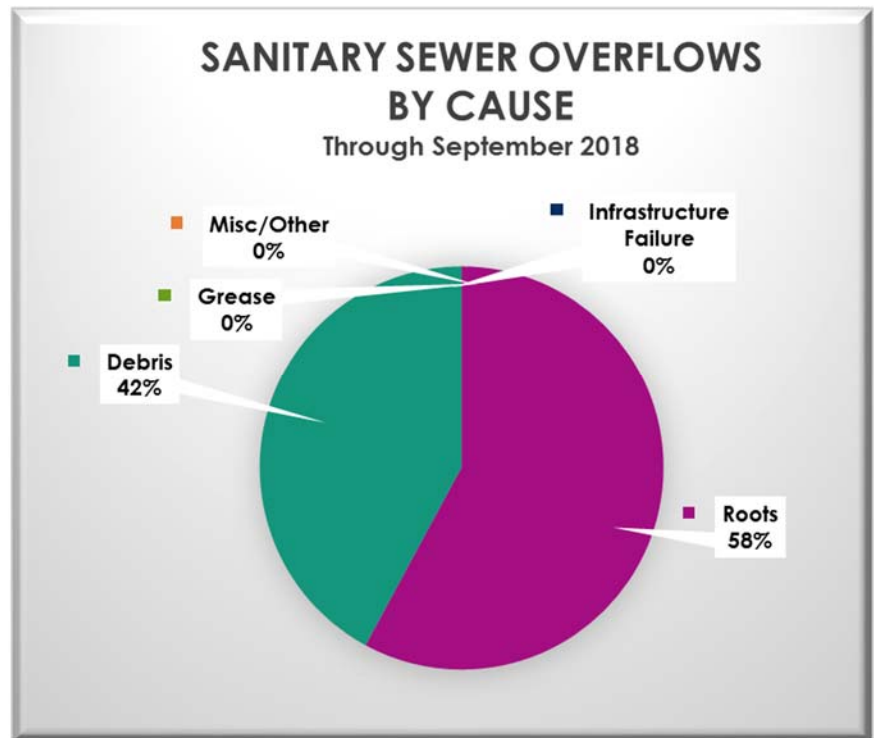
2018-2019



	July	Aug	Sept	Oct	Nov	Dec	Jan	Feb	Mar	Apr	May	June
Main Facility Usage	1,590,131	1,826,222	1,712,457									
Tertiary Facility Usage	595,955	700,642	599,359									
Total Usage	2,186,086	2,526,864	2,311,816									
Co-Gen Production	623,757	617,769	628,713									
Energy Purchased	1,562,329	1,909,095	1,683,103									



COLLECTIONS

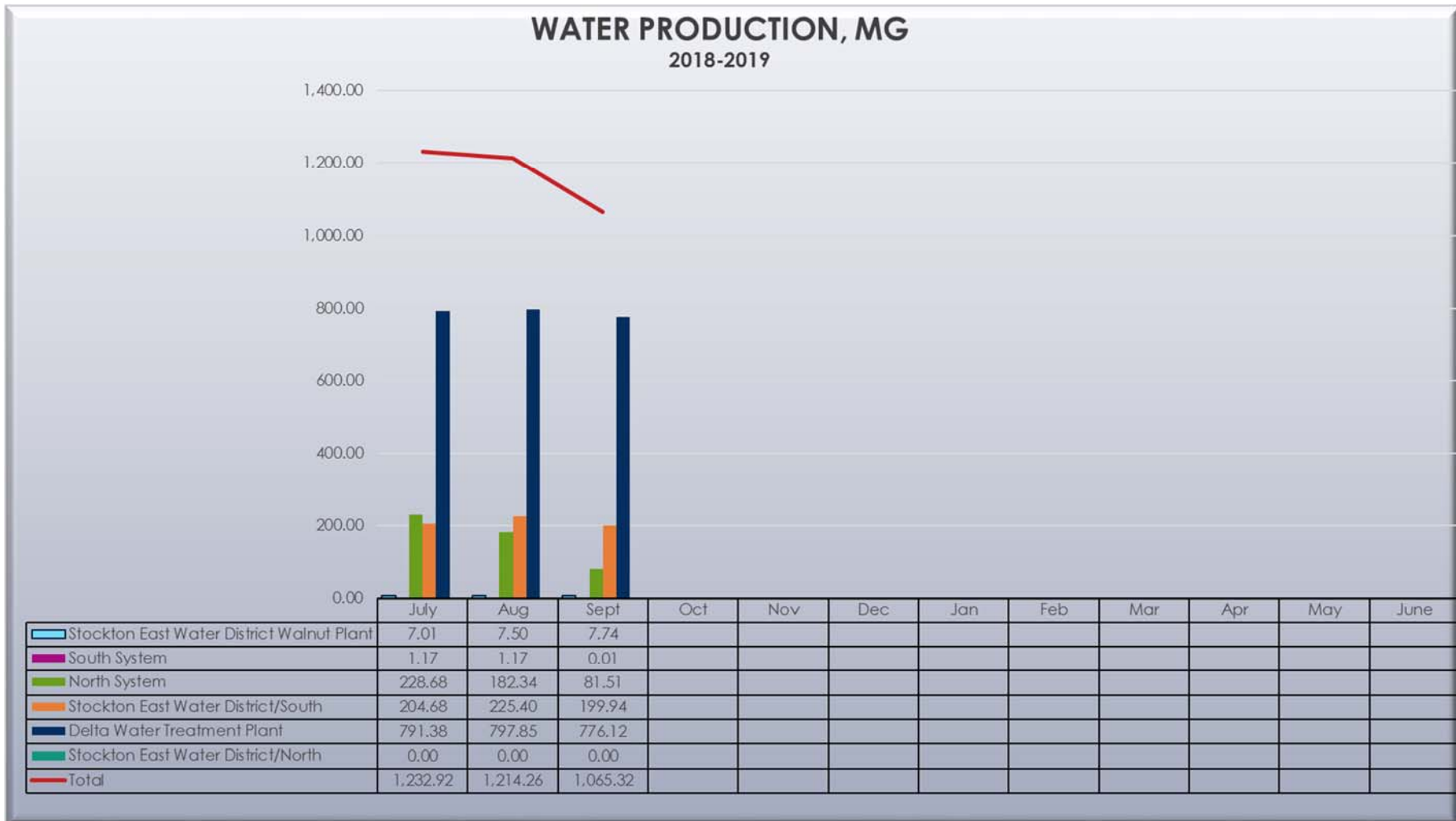




QUARTERLY OPERATIONS REPORT

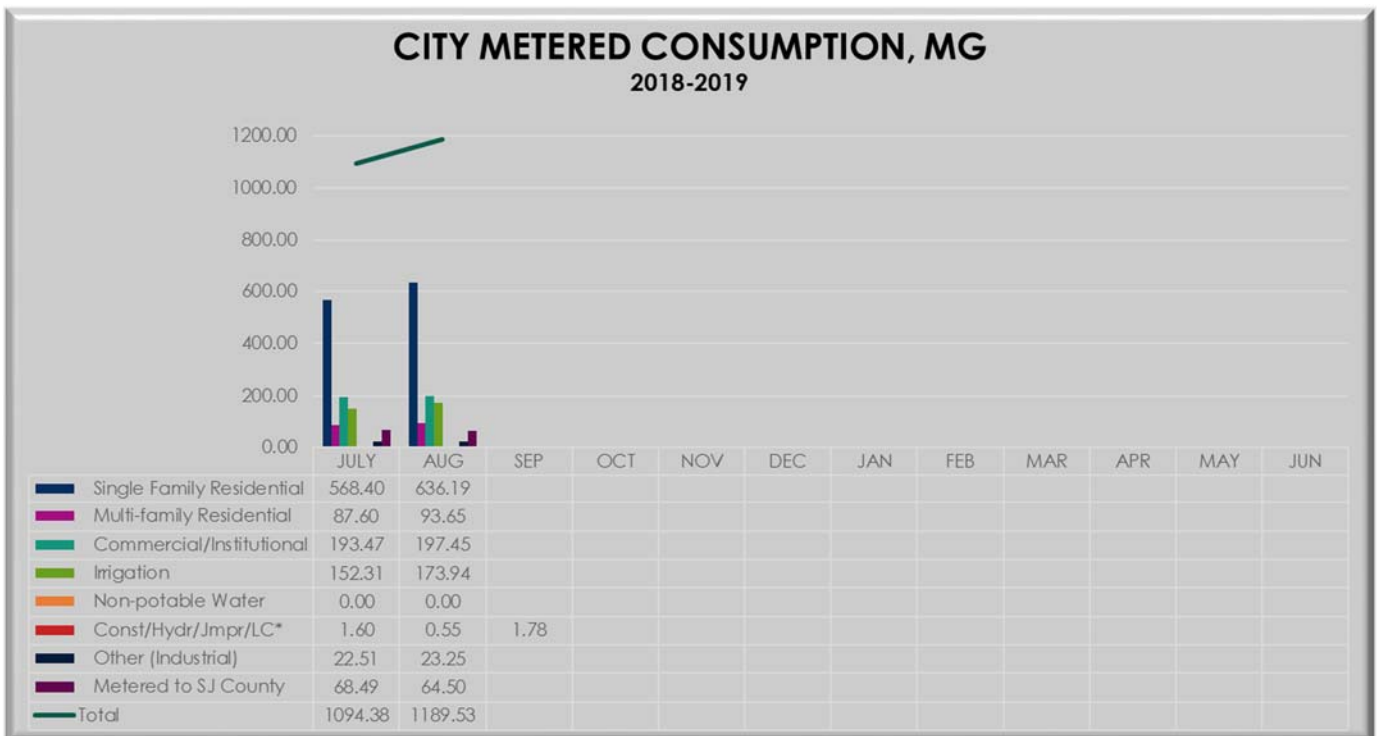
1st Quarter, July – September 2018

WATER





Meter Size	Residential	Industrial	Commercial & Institutional	Irrigation
5/8"	1739	0	15	15
3/4"	24757	15	217	72
1"	19369	0	252	152
1½"	257	0	235	163
2"	251	1	617	449
3"	12	0	66	26
4"	8	3	49	19
6"	5	1	18	3
8"	0	0	5	0
10"	0	0	2	0
12"	0	0	2	0
Totals	46398	20	1478	899
Total Number of Connections:			48,795	



*September data not available due to billing cycle.



WATER ENERGY CONSUMPTION

2018-2019



	July	Aug	Sept	Oct	Nov	Dec	Jan	Feb	Mar	Apr	May	June
S. Reservoir Usage	13,600	13,440	11,520									
N. Well Usage	285,122	232,959	109,317									
N. Reservoir Usage	71,800	76,260	70,940									
S. Well Usage	5,380	2,700	1,739									
DWTP Usage	1,088,922	1,159,472	1,083,704	0	0	0	0	0	0	0	0	0
Solar Production	0											



QUARTERLY OPERATIONS REPORT

1st Quarter, July – September 2018

STORMWATER

PERMIT COMPLIANCE

PROGRAM/ACTIVITY	SMP GOAL	JUL	AUG	SEP	OCT	NOV	DEC	JAN	FEB	MAR	APR	MAY	JUN
Enforcement Actions													
<i>Administrative</i>													
Notice of Warning		0	3	9	0	0	0	0	0	0	0	0	0
Notice of Violation		0	8	21	0	0	0	0	0	0	0	0	0
Administrative Citation 1st		1	3	0	0	0	0	0	0	0	0	0	0
Administrative Citation 2nd		1	0	0	0	0	0	0	0	0	0	0	0
Stop Work Order		0	0	0	0	0	0	0	0	0	0	0	0
Cease and Desist Order		1	2	0	0	0	0	0	0	0	0	0	0
Referred to RWQCB		0	0	0	0	0	0	0	0	0	0	0	0
<i>Criminal Enforcement</i>													
Misdemeanor		0	0	0	0	0	0	0	0	0	0	0	0
Infraction		0	0	0	0	0	0	0	0	0	0	0	0
Inspections													
Commercial		0	0	1	0	0	0	0	0	0	0	0	0
Industrial		0	2	0	0	0	0	0	0	0	0	0	0
Construction		24	28	36	0	0	0	0	0	0	0	0	0
IDDE		0	1	0	0	0	0	0	0	0	0	0	0
Training Activities													
Training Module		0	0	0	0	0	0	0	0	0	0	0	0
Public Outreach													
Educational Mat's Distributed		140	220	1330	0	0	0	0	0	0	0	0	0
*Mixed Media Campaign		0	1	1	0	0	0	0	0	0	0	0	0
Community-Wide Events		0	0	1	0	0	0	0	0	0	0	0	0
**School Outreach		1	2	17	0	0	0	0	0	0	0	0	0
Business Outreach		0	0	0	0	0	0	0	0	0	0	0	0

* Includes utility bill inserts

** Number of schools visited



SUPPORT SERVICES

ENGINEERING

Regional Wastewater Control Facility (RWCF) Progressive Design-Build Project

The RWCF Progressive Design-Build Project's objective is to plan, design, and construct wastewater treatment facilities that can meet current regulatory treatment objectives and balance future potential regulatory requirements for most conditions in a cost-effective manner, while extending the life of existing assets, within the available budget of \$150 million to \$170 million. Specifically, the project team has considered a range of design alternatives that include configuration and operation of the existing treatment plant and construction of new facilities. The AECOM/W. M. Lyles Co., Joint Venture, has generated cost-effective, creative treatment solutions and worked collaboratively with the City to identify the facility improvements that meet the project objectives.

The project will include a new headworks pump station, rehabilitated primary treatment, new secondary treatment, new tertiary treatment, and new and remodeled personnel buildings. The Draft Basis of Design Report (BDR) for those facilities comprises the project to deliver many of the Phase 2 projects identified in the 2011 Capital Improvement and Energy Management Plan as well as those improvements to meet the City's current National Pollution Discharge Elimination System (NPDES) permit issued by the Central Valley Regional Water Quality Control Board.

In this quarter, AECOM/W.M Lyles Co. updated the 50% drawing package and BDR based on collaborative Review Workshops with City staff, provided ongoing support of the environmental permitting process (CEQA Compliance), prepared draft final (Phase 1, 60%) BDR and Drawings, and began estimating efforts to prepare Guaranteed Maximum Price proposal for Phase 2 of the Project (Final 100% Design and Construction).

The City's CEQA Team prepared and distributed the Notice of Preparation of a Draft Environmental Impact Report and hosted a Community Scoping Meeting in September 2018. An administrative draft EIR is to be distributed for review in October 2018, followed by a Public Draft circulation.



LAB

THREE SPECIES CHRONIC TOXICITY TESTING

WASTEWATER SAMPLE 1st Quarter	ALGAE	CERIODAPHNIA		LARVAL FATHEAD MINNOW	
		Survival	Reproduction	Survival	Reproduction
No Observable Effect Level, NOEL	100%	100%	100%	100%	100%
Toxicity Unit, TUc	1.0	1.0	1.0	1.0	1.0

Permit requires additional monitoring at >1TUc

COLIFORM TESTING

WATER COLIFORM MONITORING 1st Quarter	SAMPLES		POSITIVE RESULTS	
	# Required	# Taken	Total Coliform	E. Coli
July 2018				
North System	150	150	0	0
Walnut Plant	1	1	0	0
South System	30	30	0	0
August 2018				
North System	123	123	1	0
Walnut Plant	1	1	0	0
South System	24	24	0	0
September 2018				
North System	120	120	0	0
Walnut Plant	1	1	0	0
South System	24	24	0	0

Results >0 indicate contamination



ENVIRONMENTAL CONTROL

PROGRAM / ACTIVITY 2018-2019	JUL	AUG	SEP	OCT	NOV	DEC	JAN	FEB	MAR	APR	MAY	JUN
Pretreatment Program												
Industrial Inspections	67	70	29									
Industrial Sampling	47	41	24									
Discharge Permits Issued/Relssued	1	0	2									
Pretreatment Enforcement Actions	7	12	12									
Waste Hauler Program												
Trucked-in Waste Loads	216	246										
Trucked-in Waste Gallons	731,415	824,542										
FOG Program												
FOG Initial Inspections	74	54	42									
FOG Enforcement Actions	35	47	28									
FOG Follow-up Inspections	26	18	28									



CUSTOMER SERVICE

WATER

Taste / Odor

- July
 - One moldy taste complaint resolved with cleaning of sink aerators.
- August
 - Seventeen earthy musty taste complaints originating from the South system on Stockton East Water District.
- September
 - One customer complaint of smell. The operator was unable to detect any noticeable smell and the issue was resolved.

Color

- July
 - One brown water complaint linked to inactive usage. Resolved with flushing in home.
- August
 - One brown water complaint resolved with in home flushing.
- September
 - Two complaints of sand present in customer tap. Issue was linked to recent repair work and resolved with in home flushing.



Pressure

- July
 - Eight complaints throughout the month for low water pressure. Operators determined causes to be faulty angle stops, broken house valves and plugged aerators. All complaints were taken care of to customers' satisfaction.
- August
 - Operators responded to eight low pressure calls caused by broken house valves, plugged aerators and angle stops partially closed. All calls were addressed and customers satisfied with the response.
- September
 - Five complaints of low water pressure. Operators determined causes to be a faulty angle stops, broken house valves, broken meter and plugged aerators. All complaints were addressed to customers' satisfaction.



WASTEWATER

Service Calls

- July
 - There were 321 service calls for the month of July.
- August
 - There were 299 service calls for the month of August.
- September
 - There were 283 service calls for the month of September.

Spills / SSOs

- July
 - There were 6 category 3 spills for the month of July.
- August
 - There were 3 category 3 spills for the month of August.
- September
 - There were 10 category 3 spills for the month of September.



STORMWATER

Flooding

- July
 - There was no storm event in the month of July.
- August
 - There was no storm event in the month of August.
- September
 - There was no storm event in the month of September.



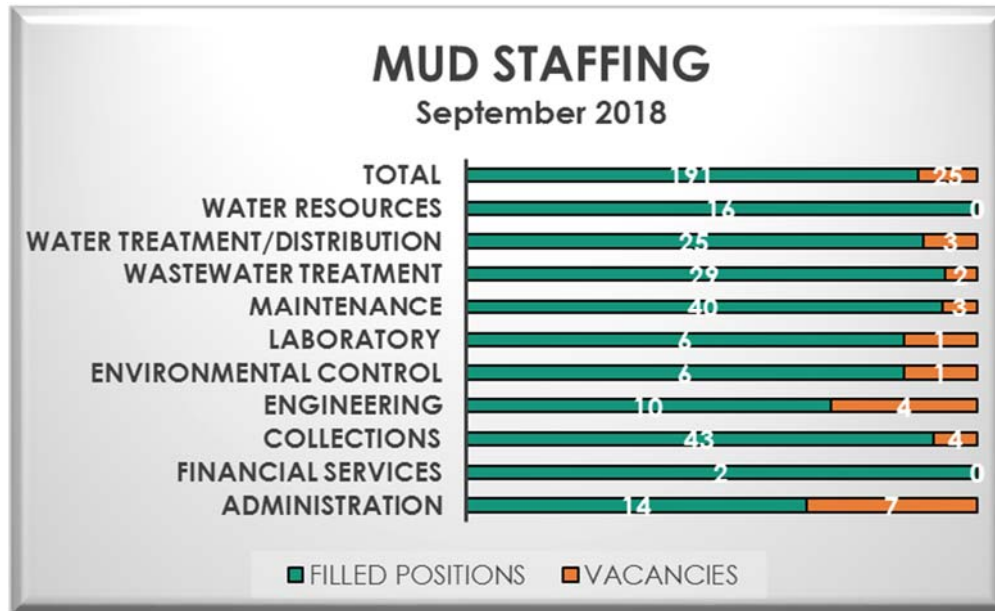
FINANCE

OPERATIONS & MAINTENANCE REVENUE/EXPENSE REVIEW

July through Sept 2018	WATER FUND			WASTEWATER FUND			STORMWATER FUND		
	FY 18-19 Budgeted	YTD Actual	Quarterly Actual	FY 18-19 Budgeted	YTD Actual	Quarterly Actual	FY 18-19 Budgeted	YTD Actual	Quarterly Actual
Revenues	55,936,163	16,293,254	16,293,254	69,696,457	17,915,354	17,915,354	5,762,194	1,501,305	1,501,305
Expenditures	50,830,629	6,327,761	6,327,761	77,644,199	6,718,184	6,718,184	7,209,389	607,915	607,915
Balance	5,105,534	9,965,493	\$9,965,493	(\$7,947,742)	\$11,197,170	\$11,197,170	(\$1,447,195)	\$893,390	893,390



ADMINISTRATION



SAFETY 2018	Jan	Feb	Mar	Apr	May	Jun	Jul	Aug	Sept	Oct	Nov	Dec	Calendar Year-To- Date*
	Reported Unsafe Acts	1	1	2	0	0	0	0	0	0			
No-Fault Vehicle Accidents	0	0	1	1	0	0	2	1	0				5
At-Fault Vehicle Accidents	1	1	2	1	1	0	2	1	1				10
Total Vehicle Accidents	1	1	3	2	1	0	4	2	1	0	0	0	15
Total # Injuries & Accidents	1	2	0	2	1	0	1	1	0				8
Lost Time Events	1	1	0	0	0	0	0	1	0				3
Work Restriction Events	0	1	0	1	0	0	0	0	0				2
Total OSHA Reportable Events	1	2	0	1	0	0	0	1	0	0	0	0	5

*Occupational Safety and Health Administration OSHA reporting is on a calendar year