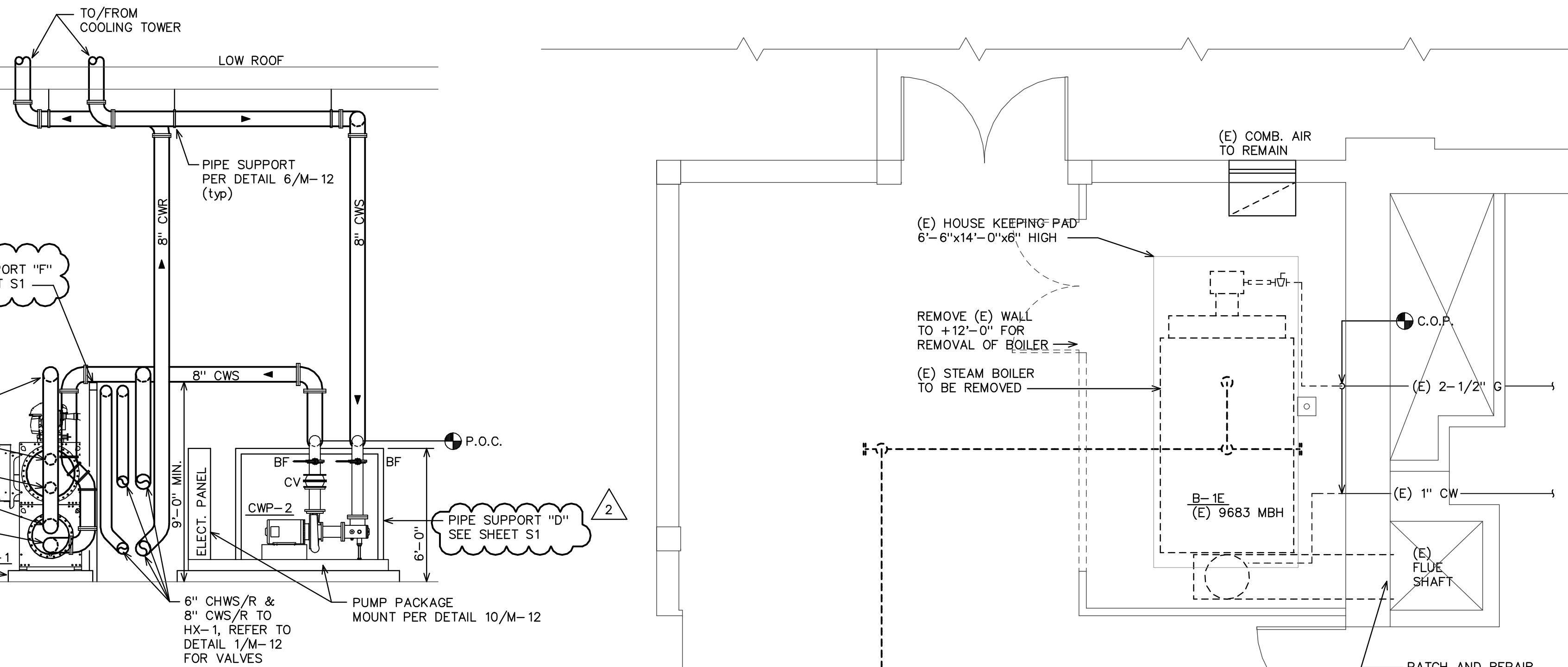
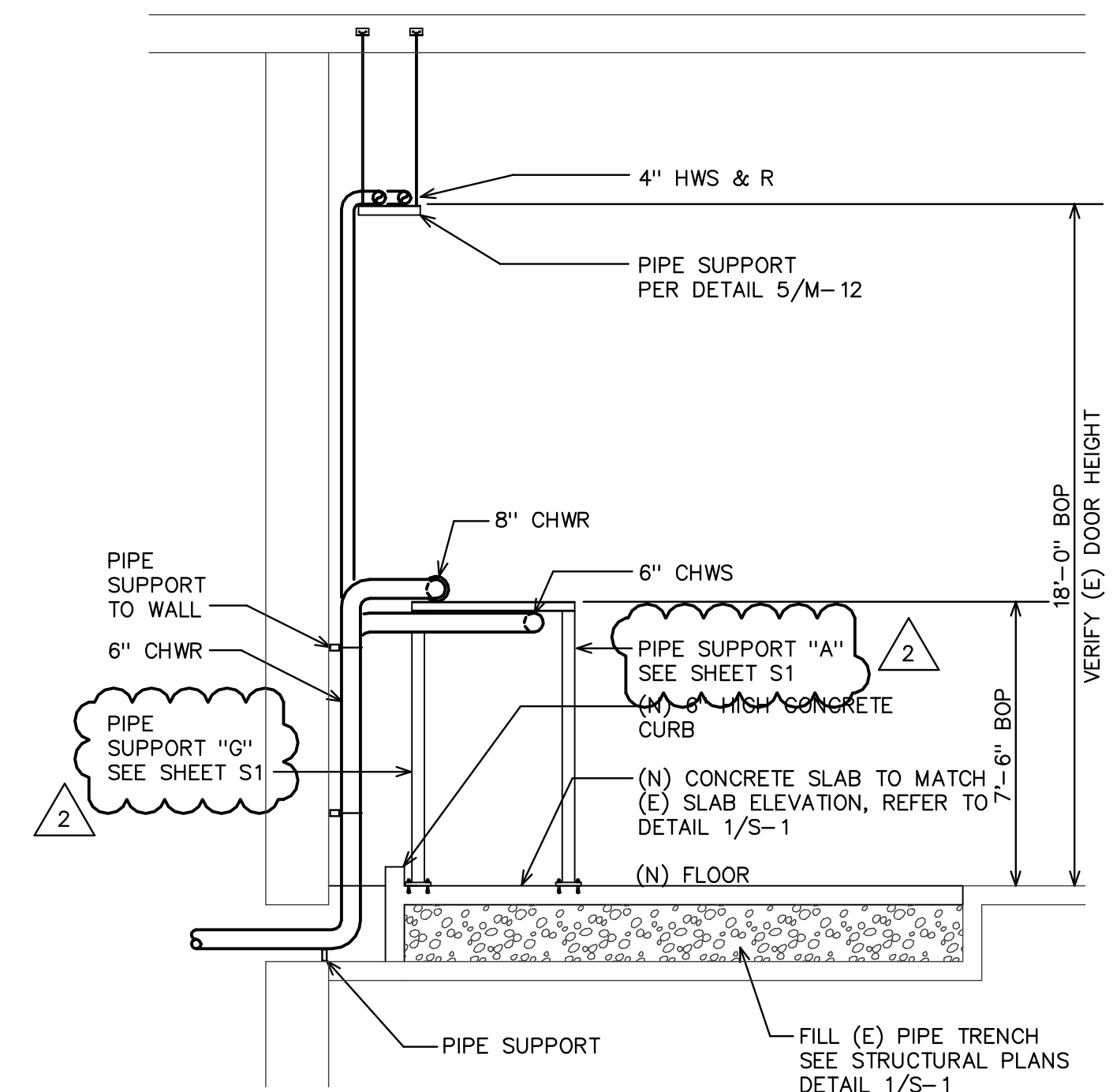


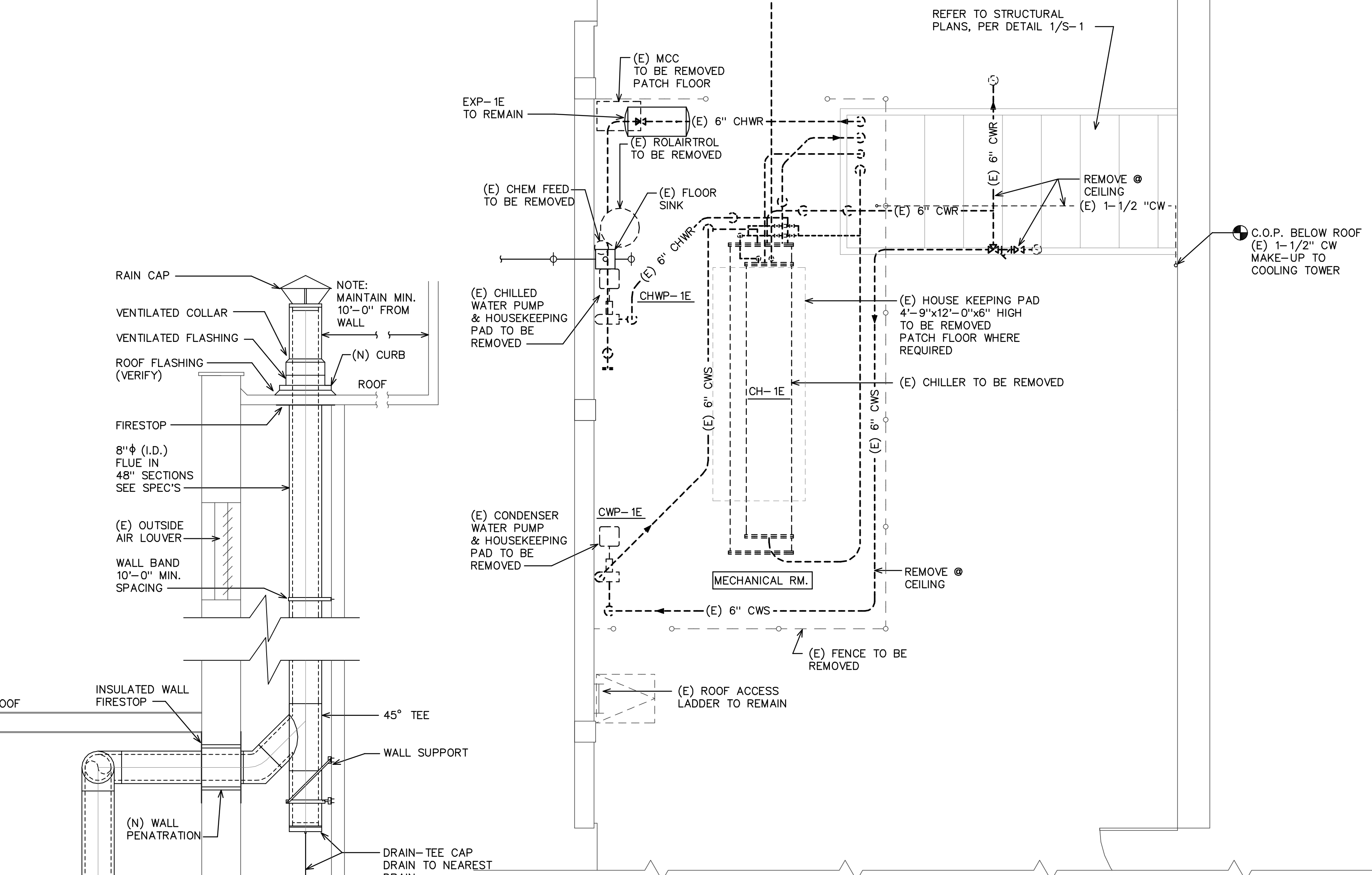
SECTION A
SCALE: 1/4" = 1'-0"
M-7



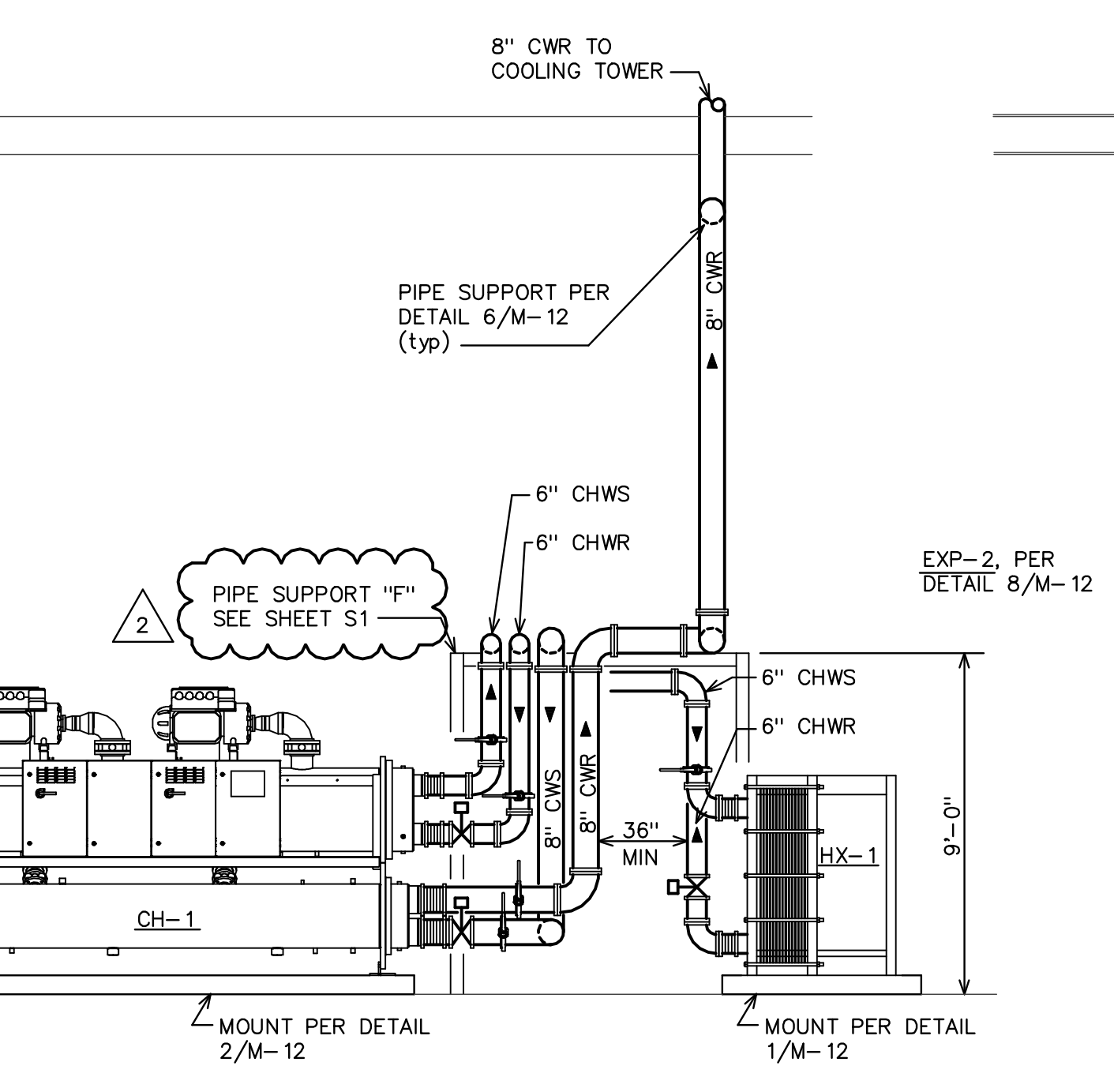
SECTION B
SCALE: 1/4" = 1'-0"
M-7



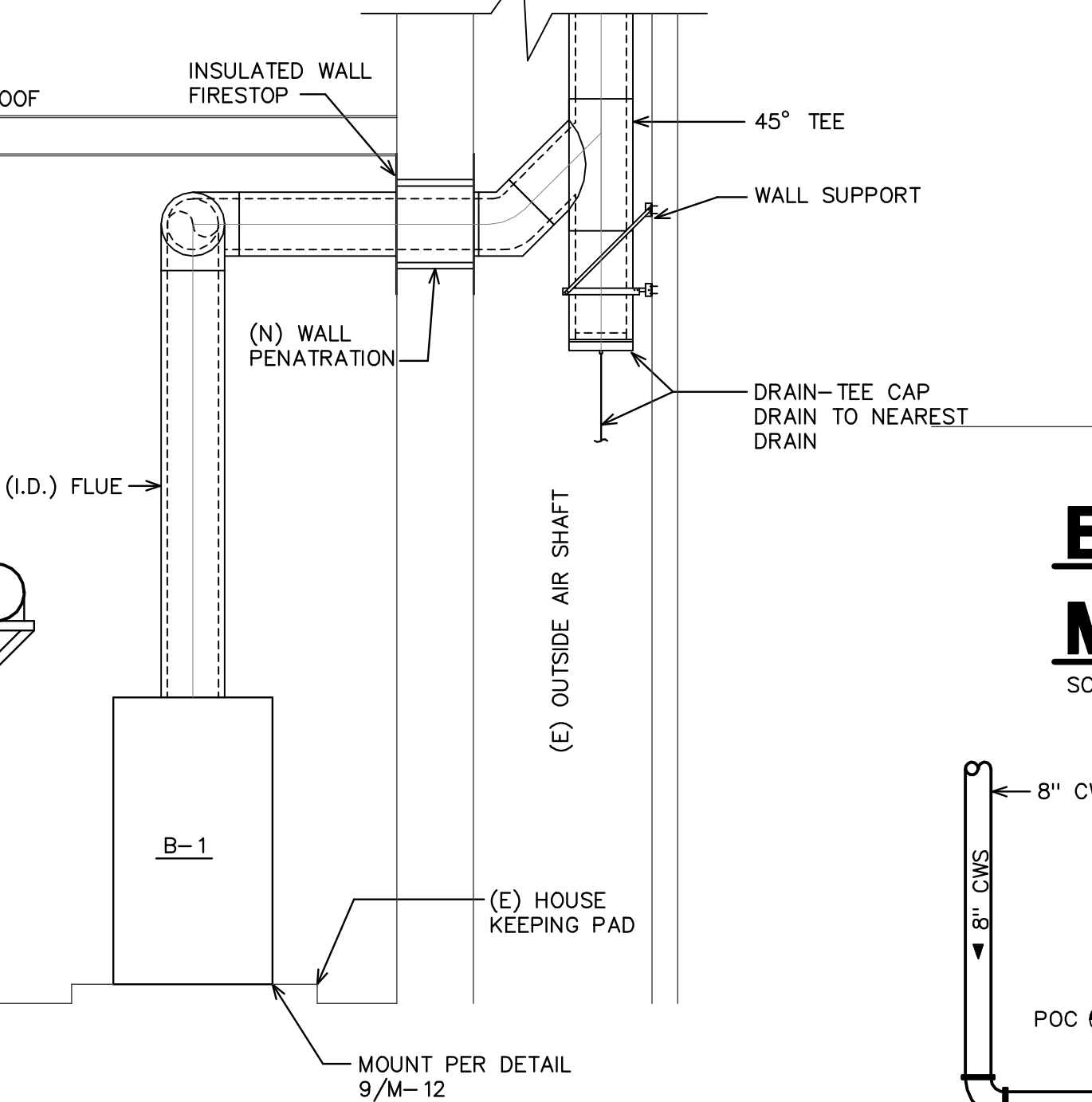
SECTION C
SCALE: 1/4" = 1'-0"
M-7



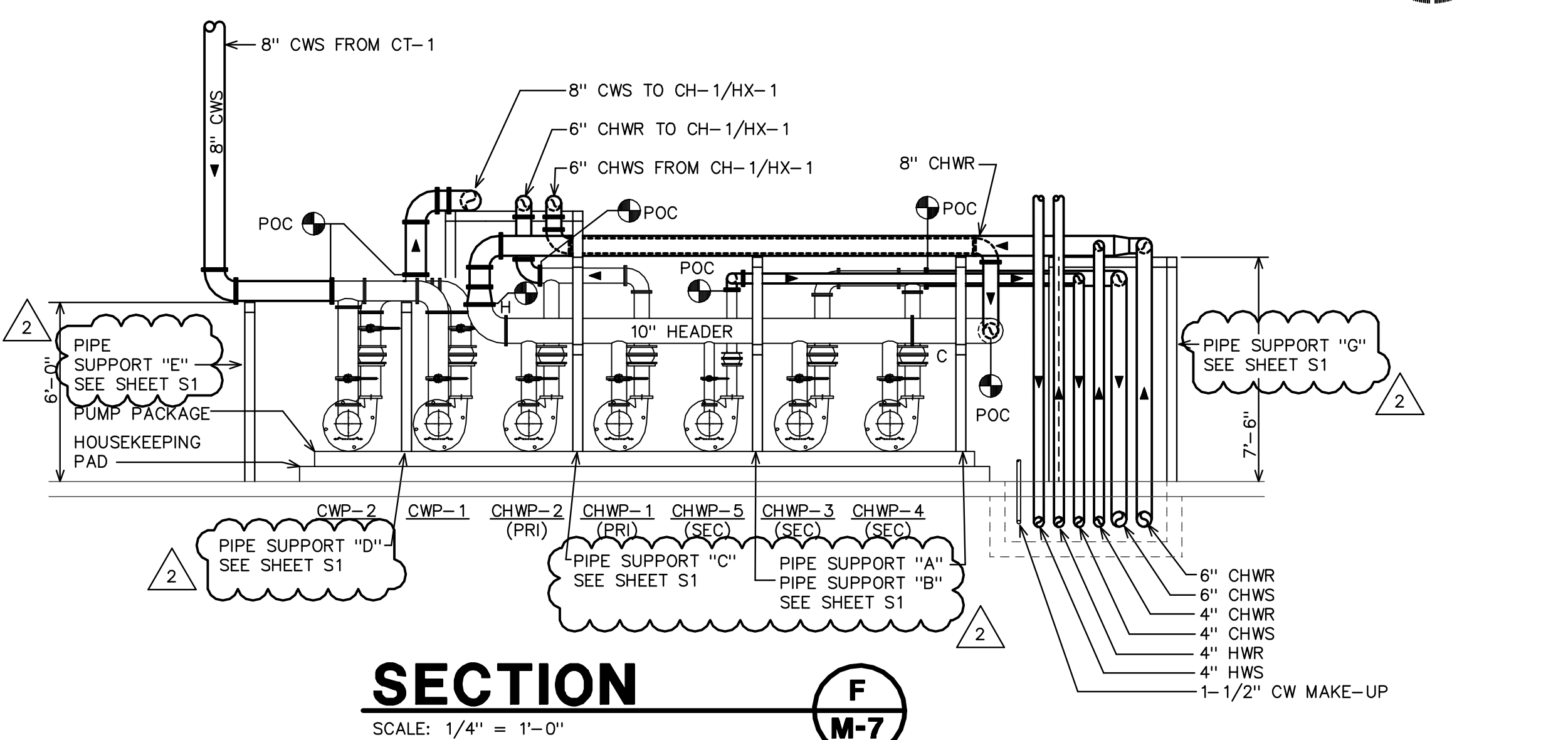
EXISTING/DEMOLITION MECHANICAL FIRST FLOOR PLAN
SCALE: 1/4" = 1'-0"



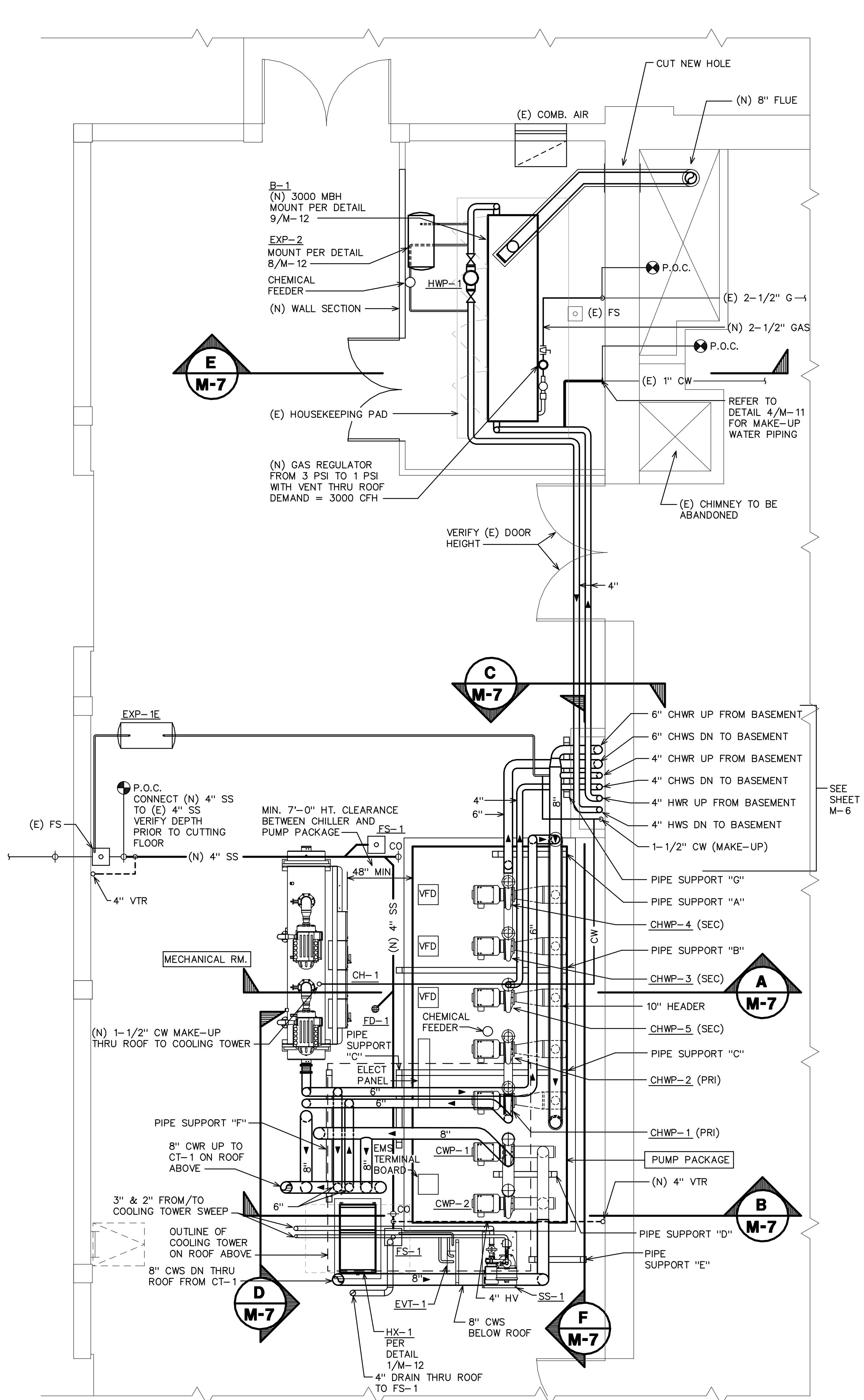
SECTION D
SCALE: 1/4" = 1'-0"
M-7



SECTION E
SCALE: 1/4" = 1'-0"
M-7



SECTION F
SCALE: 1/4" = 1'-0"
M-7



REVISED/NEW MECHANICAL FIRST FLOOR PLAN
SCALE: 1/4" = 1'-0"

NOTE:
REFER TO DETAILS 1/M-10 & 5/M-11
FOR VALVES, CONTROL WELLS, PEET'S PLUGS
LOCATIONS

NOTE:
PAINT ALL EXPOSED BARE METAL PIPE AND SUPPORTS IN
MECHANICAL ROOM AND EXPOSED STRUCTURAL STEEL IN ROOM AND ROOF

CONFIDENTIALITY STATEMENT:
The information, plans, designs and
arrangements shown on this drawing are
confidential and may not be reproduced in
whole or in part without express written
permission of Rolfe Engineering, Inc.



ROLFE ENGINEERING, INC.
1036 W. ROBINHOOD DRIVE SUITE 201
STOCKTON, CALIFORNIA 95207
(209) 473-2859 FAX (209) 473-1312
CALIF. P.E. #21002
Copyright © 2009 Rolfe Engineering, Inc.

MEMORIAL CIVIC AUDITORIUM
MECHANICAL ROOM

PERMIT #09-2517

REV. NO.	DESCRIPTION	DATE	BY	APRVD.	CITY OF STOCKTON
	BID SET	8/27/09		SCALE:	APPROVED BY: DATE:
	STRUCTURAL	8/12/09		DESIGNED BY: J.F.R.	SHEET NO. M-7
				DRAWN BY: DAN	OF SHEETS
				CHECKED BY: J.F.R.	PROJECT NO. 09-070
				RECORD DWG:	CITY ENGINEER STOCKTON, CALIFORNIA