

**A PLAN - DOCK A**  
SCALE: 1"=20'

**B PLAN - DOCK B**  
SCALE: 1"=20'

**COORDINATES**

1 N 2170351.6813 E 6330591.5038 Q OF GANGWAY 1 PLATFORM AT SEAWALL

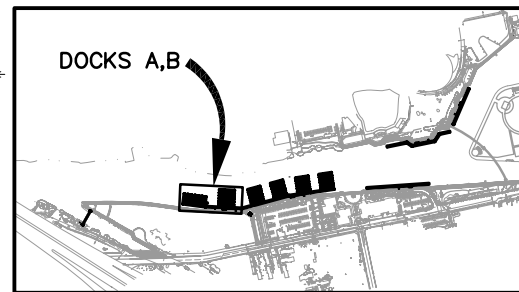
**SYMBOLS**

- ☒ ROOF SUPPORT/DOCK GUIDE PILE
- DOCK GUIDE PILE
- PLATFORM PILE
- DOCK BOX (SIZE VARIES)
- A1 SLIP I.D.

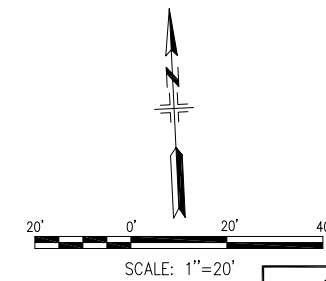
**DESCRIPTION**

**NOTES:**

- 1 DETAILS CALLED OUT APPLY TO THE DOCK LAYOUT DRAWINGS C10-C15.
- 2 UTILITIES NOT SHOWN FOR CLARITY; SEE DOCK UTILITY AND ELECTRIC DRAWINGS.
- 3 SEE GANGWAY PLATFORM DETAILS FOR SECURITY GATE LAYOUT.
- 4 SEE PROMENADE ELECTRICAL DETAILS FOR ADDITIONAL SECURITY DETAILS.
- 5 INSTALL DOCK BUMPER ALONG ALL DOCK EDGES UNLESS OTHERWISE NOTED.
- 6 INSTALL 5 CLEATS AT 10' CENTERS BETWEEN EACH SET OF PILES FOR DINGHY USE ON SHORE SIDE.



**KEY PLAN**

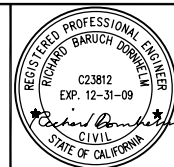


STOCKTON MARINA	
<b>DOCK LAYOUT PLAN A AND B</b>	
REDEVELOPMENT DEPARTMENT CITY OF STOCKTON, CALIFORNIA	
SCALE: 1"=20'	APPROVED BY: DATE:
DESIGNED BY: RD	REDEVELOPMENT MANAGER STOCKTON, CALIF.
DRAWN BY: TAE	
CHECKED BY: WL	
RECORD DWG:	
SHEET NO. W5	PROJECT NO. 08-007



Submittal	
%	Date
100	7-28-08
90	6-16-08
60	5-12-08

**MOFFATT & NICHOL**  
2001 N. MAIN STREET, SUITE 360  
WALNUT CREEK, CALIFORNIA, 94596  
925-944-5411



**POWER**  
ENGINEERING CONTRACTORS  
MARINE • CIVIL  
1501 Viking Street, Suite 200, Alameda, California 94501 510-337-3800

DATE: JULY 2008  
Original Drawing Scale: 0 1/2" 1"

Revisions				
No.	Description	Date	By	Appr. By

P:\6576 STOCKTON MARINA DOWNTOWN\CADD\657600\_C10.DWG 7/25/2008 1:39 PM